

CAMPOSTELLA

BUILDERS & SUPPLY CORP.

A Commitment to Quality

Established 1947

CAMPOSTELLA BUILDERS & SUPPLY CORP.

Campostella Builders and Supply Corporation is an architectural millwork company with over 59 years of successful operation. Although our initial business was as a residential cabinet company, our past 40 years have focused primarily on high-end architectural millwork and institutional casework. The great majority of our work has been in the commercial area although we occasionally produce very high-end residential projects when an architect or an owner specifically requests our services.

Our primary territory has been the Richmond to Norfolk corridor while recently expanding to cover northeastern North Carolina. Campostella Builders and Supply has invested extensively to upgrade our production machinery while continuing to service our customers with a quality product. As with all successful companies our strength is in the quality and loyalty of our employees and their positive attitudes toward producing a successful project.

We are active members in both the national and state chapters of the Architectural Woodworking Institute, the national standard for our industry. We are also "Premium Grade Certified", by the Architectural Woodworking Institute, recognition by our peers, confirming our commitment excellence and underscoring our history of consistently producing exceptional products and services.

Our goal has always been to provide a quality product along with superior service to our customers. We are a company that is very fortunate that our customers are quality corporations who are considered the premium General Contractors and owners in their respective field. They have contributed greatly to the success of our company by their continued good faith and loyalty.

We look forward to the opportunity to provide your millwork and casework requirements.
If you have any question please contact us.

Sincerely,

Doyle A Palmer
President

DoyleP@campostella.com

PREMIUM GRADE
CERTIFIED
BY THE
ARCHITECTURAL
WOODWORK INSTITUTE



109 POPPLETON STREET NORFOLK, VIRGINIA 23523
PHONE (757) 545-3212 FAX (757) 545-9353

SUSTAINABILITY

To compete within today's environmentally conscious building industry, companies must be prepared to offer services in keeping with LEED standards for green building and sustainable forestry practices. Since 2010, Campostella Builders & Supply Corporation has been proud to provide our clients with NAUF/ULEF and FSC® wood products in order to achieve their LEED goals.

Certified by Scientific Certification Systems as an Architectural Millwork Manufacturer for FSC® 100% and FSC® Mix Credit products, Campostella Builders & Supply Corporation works hand in hand with general contractors and design professionals to provide a finished product that exceeds expectations for craftsmanship and green construction.

We can assist our customers achieve the following LEED Credits:

MR4, MR5, MR6, MR7

EQ4.1, EQ4.2, EQ4.4

*Ask us about our FSC® product availability



STUDIO

THE MAIN

Hilton
HOTEL

PROSTELLA BUILDERS & SUPPLIERS
CBSC
EST. 1947



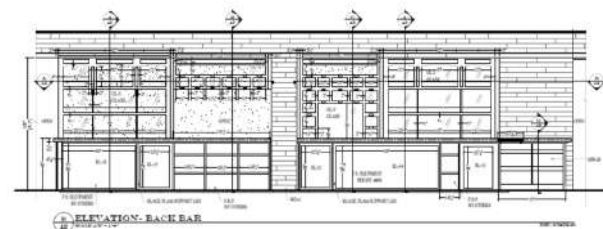
CAMPOTELLA BUILDERS & SUPPLIERS
CBSC
EST. 1947



Orion's Roof

Campostella Builders makes continuing efforts to stay on the cutting edge and in return the technology produces higher quality products at more competitive rates. Our commitment to the long term success of the company and to those we service is evident by virtue of the re-investments made into the company.

From our fleet of delivery trucks, to the daily in depth production scheduling by our management team, we strive to remember one credo: Success is never final. It is a journey.



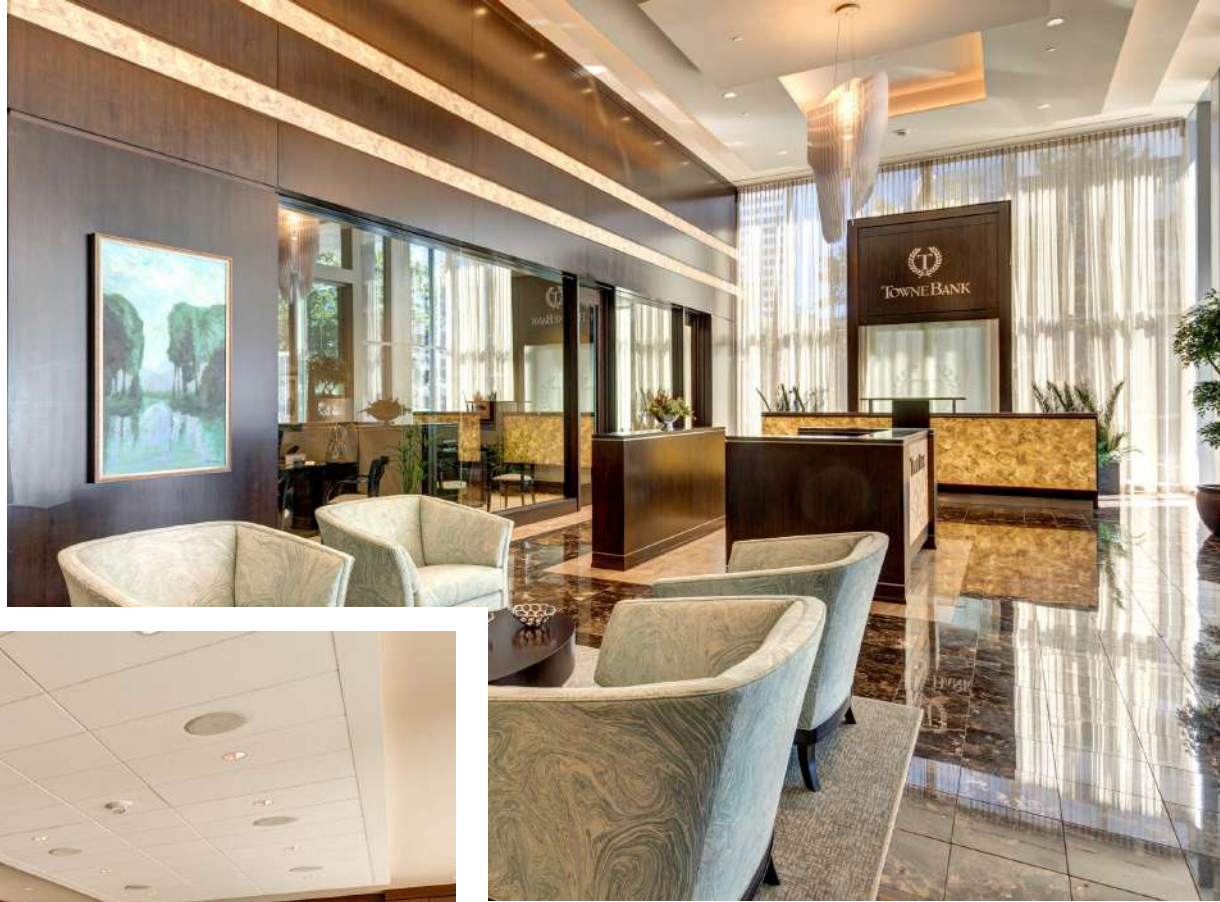


TOWNE BANK



TOWNE BANK

SUPPLY & SUPPORT
CBSC
EST. 1947



Towne Bank



Campostella Builders provides the highest quality millwork and has for decades. That longevity in the industry only serves to underscore that we realize what is important to our clients and are successful at providing it.

With around 60 employees, over 300 year of collective experience and our commitment to keeping up with technology, our ability to produce your most challenging millwork is unrivaled.



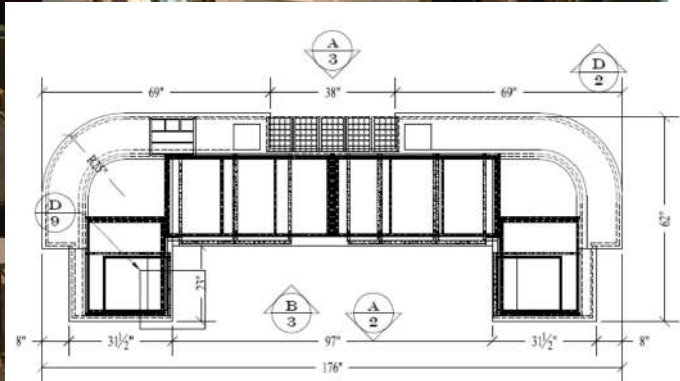
SUPPLIER & BUILDERS
CAMPOSTELLA
CBSC
EST. 1947



The Cavalier Hotel

Campostella Builders makes continuing efforts to stay on the cutting edge and in return the technology produces higher quality products at more competitive rates. Our commitment to the long term success of the company and to those we service is evident by virtue of the re-investments made into the company.

From our fleet of delivery trucks, to the daily in depth production scheduling by our management team, we strive to remember one credo: Success is never final. It is a journey.

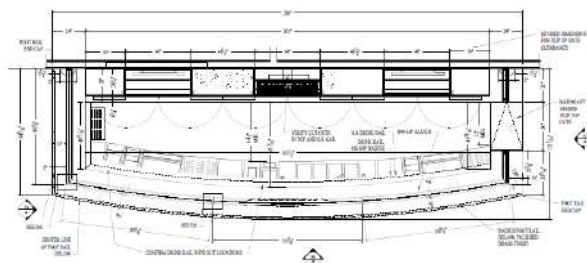




CAMPOSTELLA BUILDERS & SUPPLIERS
CBSC
EST. 1947

Princess Anne Country Club

Over 60 years of operation means Campostella Builders & Supply Corp. has consistently met or surpassed the expectations of our clients. our reputation and vision is a result of clear strong leadership and a company founded on strong principles. We at Campostella Builders would like the opportunity to share our vision and commitment with you. Please feel free to contact us and discuss how we may be of service to you.



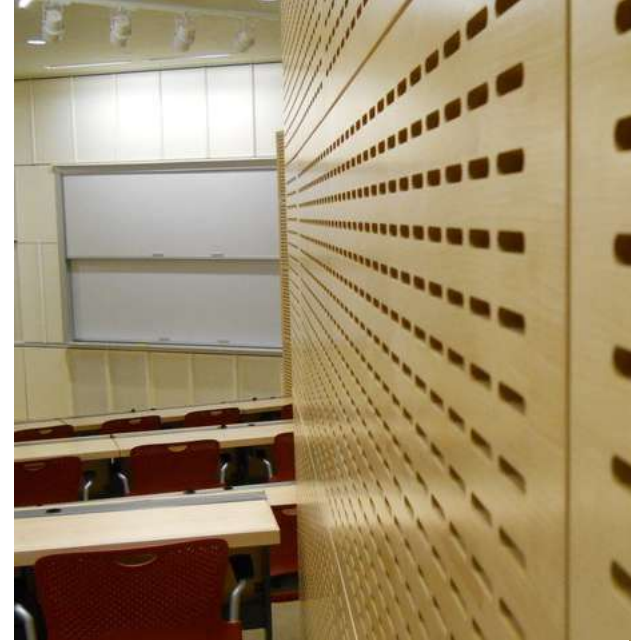


CAMPOSTELLA BUILDERS & SUPPLIERS
CBSC
EST. 1947

Dollar Tree Head Quarters

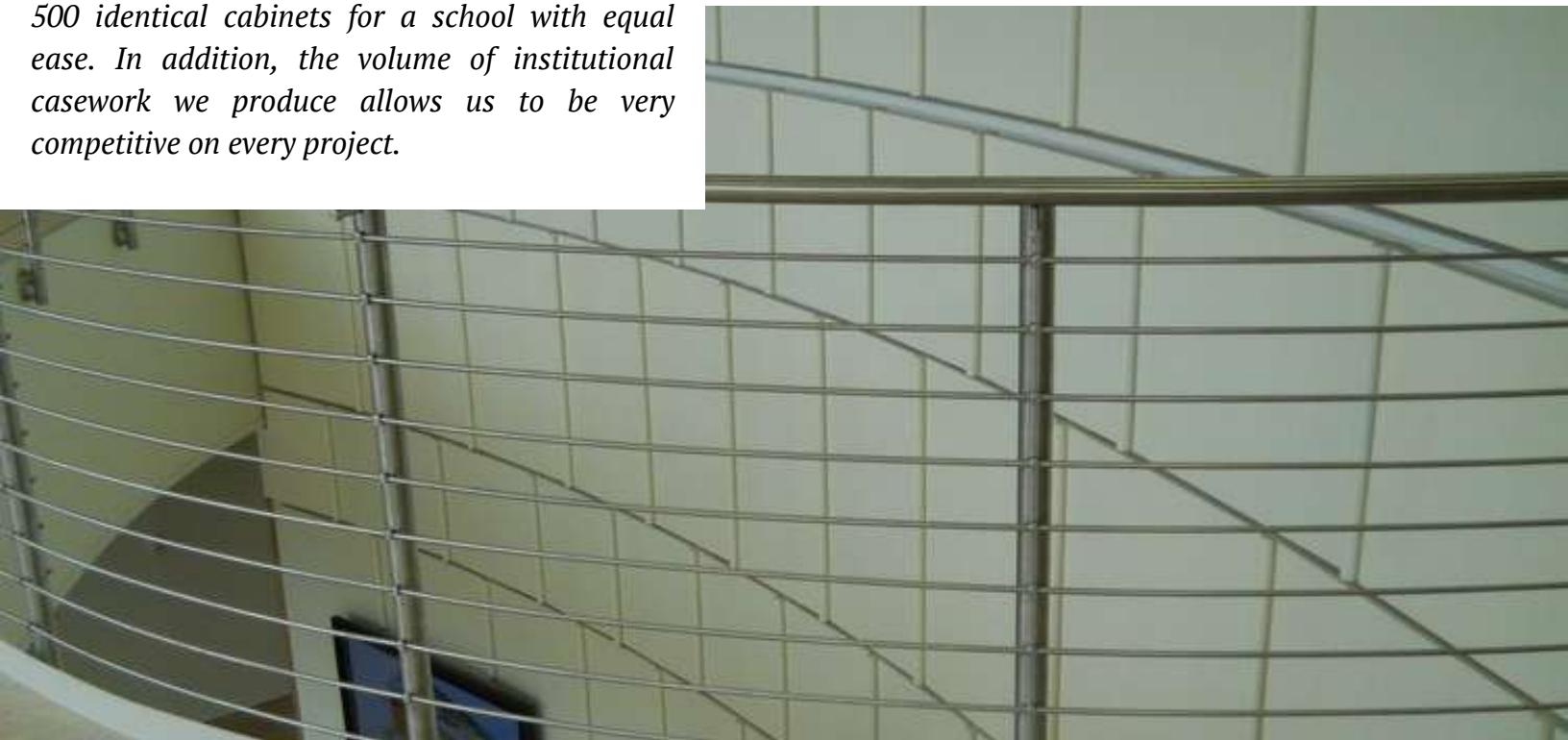
Over 60 years of operation means Campostella Builders & Supply Corp. has consistently met or surpassed the expectations of our clients. our reputation and vision is a result of clear strong leadership and a company founded on strong principles. We at Campostella Builders would like the opportunity to share our vision and commitment with you. Please feel free to contact us and discuss how we may be of service to you.





University of Virginia

Institutional Casework, whether plastic laminate or pre-finished veneer, is an integral part of our scope of products. With the technology we have incorporated into our process, we are able to produce 3 unique cabinets for a reception desk or 500 identical cabinets for a school with equal ease. In addition, the volume of institutional casework we produce allows us to be very competitive on every project.



Richmond Marriott

Over the years, Campostella Builders and Supply Corporation has built our reputation on delivering quality products to projects throughout the Mid-Atlantic United States. For decades, our craftsmen have brought high end architectural elements to life for some of the most demanding and high profile clients, architects, designers, and contractors in the region. Our millwork and institutional casework is on display in innumerable structures and homes throughout the area.



University of Mary Washington

As a company, we are active member at both the state and national levels of the Architectural Woodwork Institute. We are certified by AWI as a self certified, Premium member for both architectural millwork and casework. We are also self certified for projects requiring AWI premium labeling. This level of excellence and performance creates an environment of trust with our clients and allows us to focus on the projects intent and details with all parties understanding the end result will be exactly as specified.



Yorktown Visitor Center

The vast majority of our projects are commercial or institutional with major contractors in the area, with whom we have developed symbiotic relationships. However, when an architect, designer or owner requests our services for a private residence, they do so with confidence and the knowledge that even the most discriminating home owner will be exceptionally pleased with our product.



Hopewell Library

The consistency and reliability of Campostella Builders and Supply Corp. is what has kept our clients coming back and as a result allowed us to ply our craft for over 60 years. A commitment to quality since 1947.

Our mechanics are able to fabricate even the most unique concepts into tangible three dimensional objects that put the finishing touches into, on and around today's contemporary architecture.



*Ferguson Performing
Arts Center*



*Hilton
Garden
Inn*





Towne Bank

The vast majority of our projects are commercial or institutional with major contractors in the area, with whom we have developed symbiotic relationships. However, when an architect, designer or owner requests our services for a private residence, they do so with confidence and the knowledge that even the most discriminating home owner will be exceptionally pleased with our product.



Some Of Our Recent Projects

150 W. Main Street Lobby, AAA Car Care Center • Advanced Imaging • Alexander Reagan Headquarters • Armada Hoffer 21st floor lobby • Arrowhead School • B.B. & T. • Bachelors Enlisted Quarters Naval Air base • Baltimore/ Washington International Airport Sheraton • Bank of America • Barksdale Field Dorms • Batten Arts & Letters • Batten Residence • Bayside Harley Davidson • Belle Harbor Campus • Bon Secours • Branch House • Bruton Parish Church • Bryd & Baldwin • Cape Henry Collegiate School • Checkered Flag Toyota • Chesapeake General Hospital • Children's Hospital of the Kings Daughters • Christopher Newport University Library • Christopher Newport University Residence Hall • Christopher Newport University Student Center • Christopher Newport University, University Place • Christopher Newport University Village • Clancy and Theys Office • Coleman Elementary • Complete Women's Care • Country Inn Suites Courtyard Industries • East Carolina University Library • Ebenezer Baptist Church • Ferguson Enterprises Executive Floor Renovation • First Baptist Church • First Presbyterian Church • Flexa • Founders Inn Day Spa • Gloucester Medical Arts Building • Goodman & Company • Gotti's Grinders • Governors Building @ Colonial Crossing • Grace Covenant Presbyterian Church • Green Gifford • Hampton Inn & Suites • Hampton Sydney Football Stadium • Harbor Group • Harbor's Edge • Heritage Bank • Hermitage at Cedarfield • Hopewell Regional Library • James River Country Club • Jamestown Theater • Kaufman & Canoles • Konikoff Office Renovations • Langley Federal Credit Union • Fountain Plaza • Lewis Ginter Botanical Gardens • Liberty Inn Renovation • Linear Accelerator Addition Chesapeake General Hospital • Louis Obici Hospital • Lynnhaven Elementary School • Maersk • Marine Research Lab • Marshall-Wythe Law Library • Mary Immaculate Hospital • Maryview Blvd. • Mast One • National Agricultural Library • Nautilus • Naval Federal Credit Union, Hampton Blvd. • Naval Federal Credit Union, Kempsville • NDC Medical • New Kent High School • Norfolk Department of Human Services • Norfolk State University Robinson Technical Center • One City Center • Orcutt Baptist Church • Orthopedic & Spine Center • Patrick Henry Room Williamsburg Landing • Pavilion Center II • Pepsi Cola Bottling Plant • Pomoco Nissan • Powhatan High School • Princess Anne Country Club • Priority Toyota • Providence Road Family Practice • Regent University • River's Edge • Riverside Medical • Riverwalk Landing • SACLANT • Saints Bede's Catholic Church • Saint Catherine's Athletic Center • Saint Gregory's Catholic Church • Saint Patrick's Catholic School • Saltmeadow Bay Apartments • Sanctuary @ False Cape • Sara Lee Coffee & Tea • Saxon Capital Headquarters • Sentara Belle Harbor tenant • Sentara Careplex • Sentara Gloucester Diagnostic • Sentara Newtown Tenant Space • Sheraton Inn • Small Hall at William & Mary • Smithfield Foods Corporate Headquarters • Springhill Suites • Staunton Nissan • Sthil Engineering Expansion • Symantec Office Complex • Thalia United Methodist Church • The Arbors • The Point at City Center • Thomas Nelson Community Collage • Towne Bank Corporate Center • Towne Bank Crawford • Towne Bank Greenbrier • Towne Bank High Street • Towne Bank, Towne Center • Towne Bank Warwick • Trader Square • Tri-Cities • Up Against the Wall • Vandeventer Black • Verizon • Victory Elementary School • Virginia Commonwealth, University Monroe Park Campus • Virginia Commonwealth University Rhodes Hall • Virginia Commonwealth University School of Engineering • Virginia Port Authority • VMASC Mast Center • W. M. Jordan Office Renovation • Ware Office Bldg. • Westminster Canterbury Charlottesville • Westminster Canterbury Morningside • Westminster Canterbury Renovation • Westminster Canterbury Richmond • Westminster Canterbury Shore Drive • Wilcox & Savage • Williamsburg Hospital • Williamsburg Landing • Williamsburg Lodge • Williamsburg Wellness • Windsor Meade • Wolcott Rivers PC • Yorkminister Presbyterian Church • Zion Baptist Church